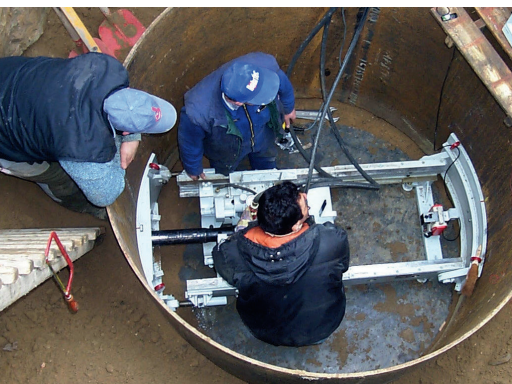
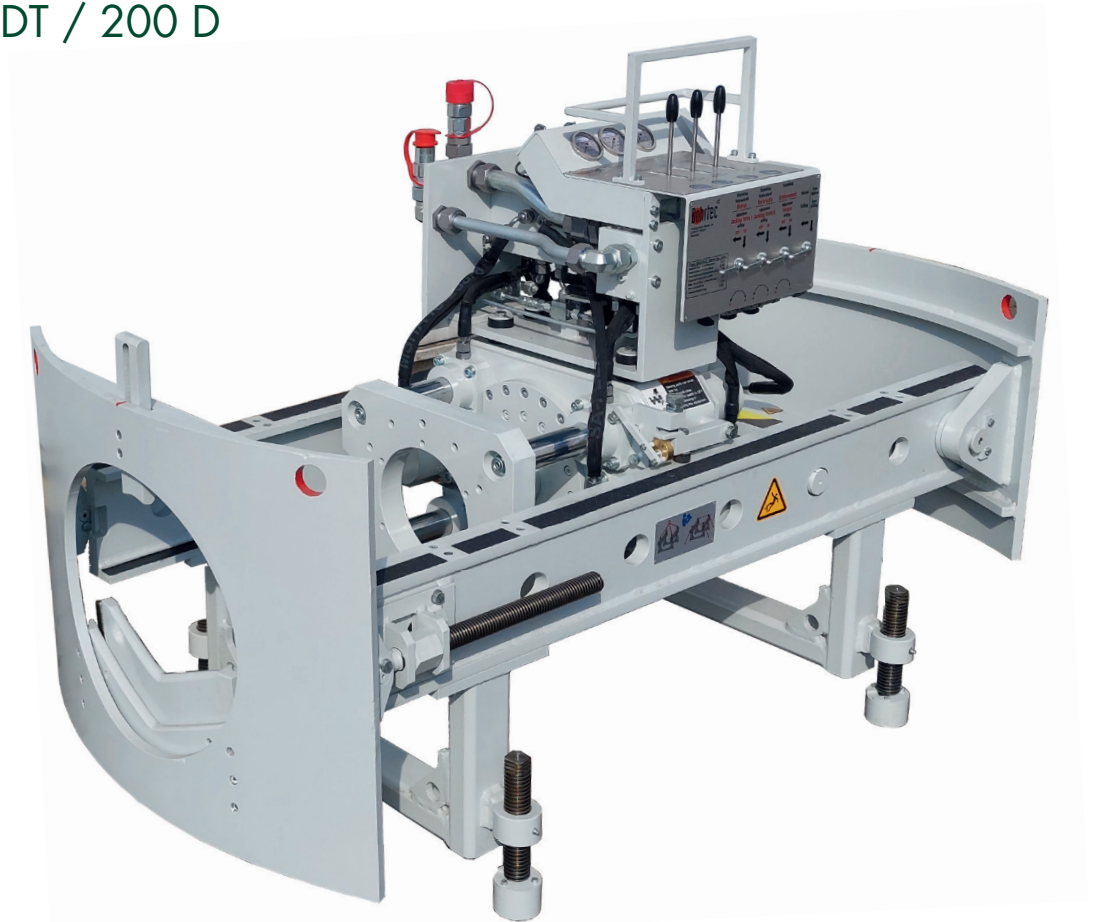
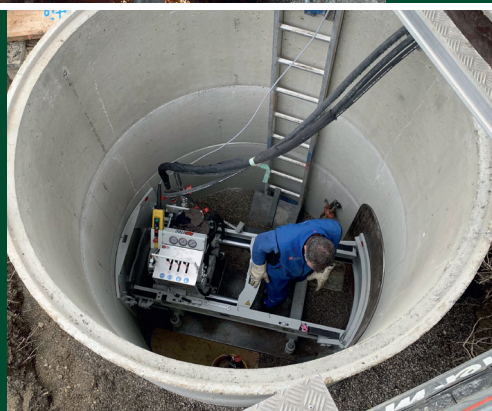


# Compact Machines up to 500 kN / 50 to BM 150 D / 150 DT / 200 D



**BM 150 D  
BM 150 DT**

**BM 200 D**



# Technical Data

Compact Machines up to 500 kN		BM 150 D	BM 150 DT	BM 200 D
<b>Jacking mechanism</b>				
Jacking force	[kN]	250	156	500
Retracting force	[kN]	150	93	250
Piston stroke	[mm]	300	430	280
<b>Boring mechanism</b>				
Torque (max.)	[Nm]	4.000	4.000	8.500
Speed (max.)	[rpm]	70	70	60
Stroke of gearbox movement	[mm]	-	-	200
Speed of core drill	[rpm]	130	130	120
Auger connector	[mm]	41	41	60
<b>Measures and weight of machine</b>				
Length machine	[m]	1,40	1,20	2,00
Width machine	[m]	0,90	0,90	1,00
Weight machine	[kg]	650	600	1.250
<b>Pipe diameter and height of axis</b>				
OD of pipes (max.)	[mm]	280	280	406
Height of machine axis	[mm]	330	-	500
<b>Launch shaft</b>				
Length launch shaft (min.)	[m]	1,40	1,20	2,00*
Width launch shaft (min.)	[m]	Width of machine plus working space		
Diameter circular launch shaft (min.)	[m]	1,50	Tunnel ID 1200	2,00
<b>Power unit</b>				
Name of unit		HD24	HE24	HD55
Type of motor		Diesel	Electric	Diesel
Power	[kW]	24	24	55
Type of pump		constant	constant	power controlled
Pressure (max.)	[bar]	250	250	320
Flow rate (max.)	[l/min]	48	48	132
Oil tank capacity	[l]	100	100	230
Fuel tank capacity	[l]	50	-	90
<b>Measures and weight of power unit</b>				
Length power unit	[m]	1,45	2,10	2,35
Width power unit	[m]	0,90	0,70	1,20
Height power unit	[m]	1,20	0,90	1,90
Weight power unit	[kg]	800	750	1.600

\*without frame extension

All systems are subject to changes without prior notice. We do not take any liability for printed errors and/or mistakes.

